

Intelligent Date Inspection System

Features and benefits

- iDiS confirms batch integrity by verifying that each product barcode matches the expected code. Integrity is ensured as iDiS inhibits the line if a mis match is present.
- iDiS confirms correct application of Use By/Best Before Date thereby ensuring that un-marked/ poorly marked product or misaligned codes does not reach the customer.
- iDiS allows reconciliation of failed product as failures are tracked and removed from the line into a reject bin. The reject bin can only be opened from within iDiS.
- All interaction with the system is only allowed if a user is logged in. A record of all interaction is logged to file thus providing traceability and transparency of system variables.

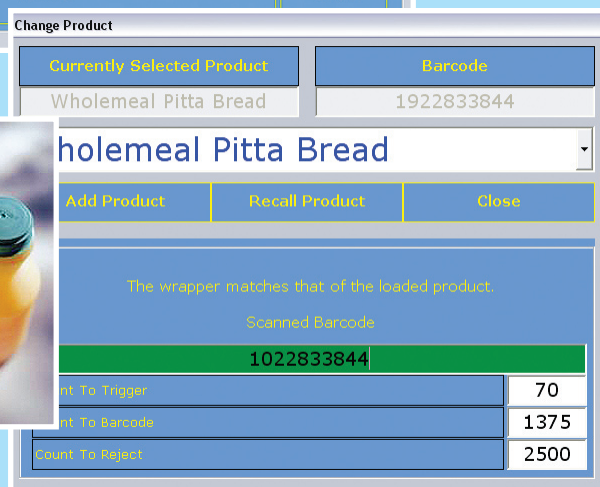
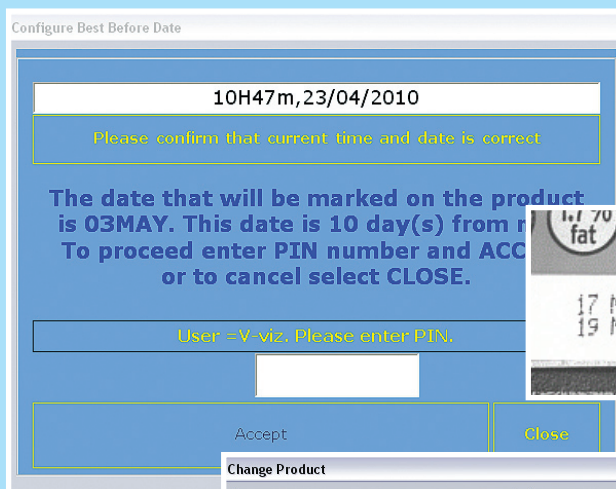
V-viz's iDiS system is to ensure batch integrity and confirm correct application of Use By / Best Before date in the Food and Beverage industry.

When initiating production of a new batch the user must select his name from the list of configured users and enter a PIN number to allow access to product selection.

The user then selects the product that is to be run from a list. Once selected the barcode on the packaging must be manually scanned using the incorporated handheld scanner. The code can be a traditional 1D barcode or 2D Data Matrix code.

The next step is to configure the date. On commissioning the system will be set to project a date X days in advance of the present. The user can choose to use this or can adjust the date manually. This date is the expected printed date. iDiS will confirm that each and every product has this date marked in the appropriate area on the packaging. The printer date must be set separately and independently of iDiS to ensure that an incorrect date is not sent to both.

Once the date has been configured on iDiS the user will be prompted to enter their PIN number again. iDiS can now be set to run mode.



Each and every product that is processed will have its barcode read and checked to ensure that it matches the selected product.

Each printed date will be read to ensure that it matches the expected date. The quality of the printed characters is also confirmed.

iDiS

PRODUCT DATA SHEET

VZI4



Intelligent Date Inspection System

Any failed product is tracked to a reject position where iDiS will cause a rejecter to remove the product from the line.

iDiS can be integrated such that it prevents product being produced unless the system is in Run mode and thus inspecting product.

iDiS will inhibit the production line if mismatching barcode is detected. In this case the operator must acknowledge a 'Batch Mix Detected' error message and enter their PIN before the line can be restarted.

If iDiS detects 5 consecutive failures then the production line is inhibited. This ensures that the production is stopped and the user prompted to rectify the issue (i.e. printer failing to produce a mark) quickly without an excessive amount of product being sent to the reject bin.

The reject bin can be fitted with a solenoid. The solenoid can be released for a period via iDiS. The user must enter their PIN to be able to access the rejected product. This allows a proper reconciliation procedure to be put in place to ensure that rejected product does not end up being shipped to the customer.

An audit log of each batch initiated is recorded. The log includes the batch start and stop times, number of products processed, passed and failed. It also records the ID of the product and the date printed

640x480 (639,204) V=(117)Character validation search complete

Wholemeal Pitta Bread			
1922833844		1922833844	
02MAY		02MAY	
Inspections	7271	Passed	6892
Failed	379	Pass Rate %	94.78
Failed BARCODE	105	Failed DATE	318
Overall Throughput	22.3	Current Throughput	41.6

on the product. Each change that a user initiates (i.e. set up or change date, set up product, acknowledge mis match or consecutive rejects, Start and Stop system, open reject bin) is logged against the user's name.

iDiS can also be used to confirm batch integrity where no barcode is present. In this case verification of unique features on the packaging is performed.

For any further product information or application details please contact: +44 (0)1926 611 740 www.v-viz.com

About V-viz Ltd

V-viz was established in 2004 as an independent machine vision solution provider and has been successfully supplying and deploying inline machine vision inspection solutions to leading global manufacturing companies ever since. Recognising the value added expertise and experience in applying machine vision we are approved and certified by many leading vision vendors including Datasensor, Festo, Microscan, Stemmer and SICK.

V-viz prides itself as a proven competent and reliable supplier of integrated machine vision inspection systems and has a rapidly expanding global customer base across Automotive, Food & Beverage, Consumer Goods, Medical Device, Pharmaceutical and Primary Metals.

Making a significant and successful investment in automated inspection requires selecting a vendor whose proven expertise and understanding of applying the technology into a manufacturing environment ensures the success and long term reliability of the solution. By contracting V-viz customers ensure that their investment is adopted successfully, effectively and to the highest possible standards of on-going support.